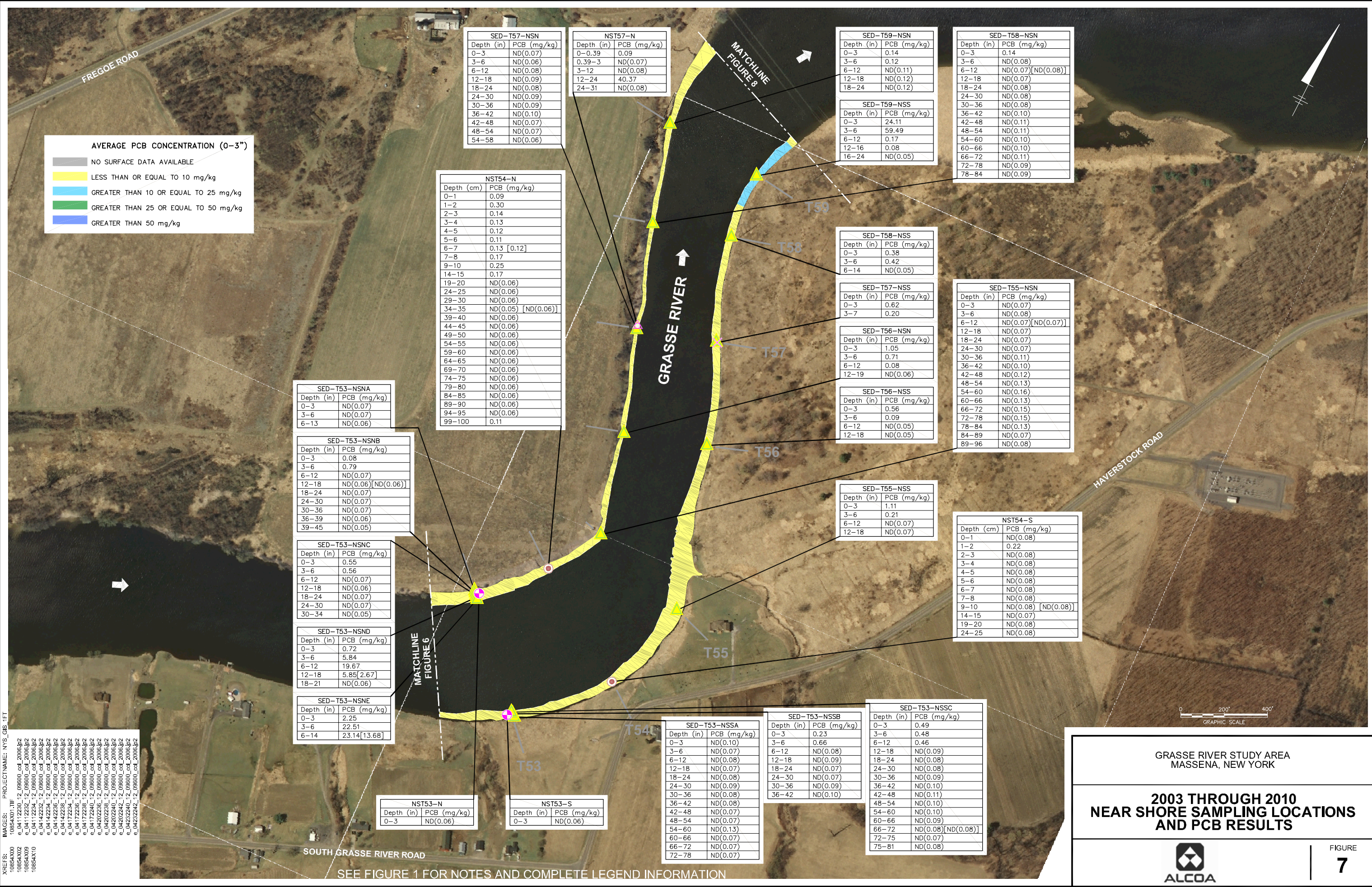


CITY: SYRACUSE, NY; DM: GROUP; ENV: CAD; DB: L. POSEMAUER, K. DAVIS, L. FORAKER, LD, L. POSEMAUER; PIC: H. VANDEWALKER; PM: H. VANDEWALKER; TMS: S. HILL; LVR: ON; OFF: REF; G:\ENVCAD\SYRACUSE\ENVCAD\10054000000000000000\10054000000000000000\DWG\NEAR SHORE AERIAL\PCB\0854007.DWG; LAYOUT: 7; SAVED: 9/1/2011 11:43 AM; ACADVER: 18.15 (LMS TECH); PAGES: 1; PLOT: 9/1/2011 11:43 AM; BY: FORAKER, LYDIA



AVERAGE PCB CONCENTRATION (0-3")

NO SURFACE DATA AVAILABLE
LESS THAN OR EQUAL TO 10 mg/kg
GREATER THAN 10 OR EQUAL TO 25 mg/kg
GREATER THAN 25 OR EQUAL TO 50 mg/kg
GREATER THAN 50 mg/kg

SED-T53-NSNA

Depth (in)	PCB (mg/kg)
0-3	ND(0.07)
3-6	ND(0.07)
6-13	ND(0.06)

SED-T53-NSNB

Depth (in)	PCB (mg/kg)
0-3	0.08
3-6	0.79
6-12	ND(0.07)
12-18	ND(0.06) [ND(0.06)]
18-24	ND(0.07)
24-30	ND(0.07)
30-36	ND(0.07)
36-39	ND(0.06)
39-45	ND(0.05)

SED-T53-NSNC

Depth (in)	PCB (mg/kg)
0-3	0.55
3-6	0.56
6-12	ND(0.07)
12-18	ND(0.06)
18-24	ND(0.07)
24-30	ND(0.07)
30-34	ND(0.05)

SED-T53-NSND

Depth (in)	PCB (mg/kg)
0-3	0.72
3-6	5.84
6-12	19.67
12-18	5.85 [2.67]
18-21	ND(0.06)

SED-T53-NSNE

Depth (in)	PCB (mg/kg)
0-3	2.25
3-6	22.51
6-14	23.14 [13.68]

SED-T53-NSNA

Depth (in)	PCB (mg/kg)
0-3	ND(0.10)
3-6	ND(0.07)
6-12	ND(0.08)
12-18	ND(0.07)
18-24	ND(0.08)
24-30	ND(0.09)
30-36	ND(0.08)
36-42	ND(0.08)
42-48	ND(0.07)
48-54	ND(0.07)
54-60	ND(0.13)
60-66	ND(0.07)
66-72	ND(0.07)
72-78	ND(0.07)

SED-T53-NSNB

Depth (in)	PCB (mg/kg)
0-3	0.23
3-6	0.66
6-12	ND(0.08)
12-18	ND(0.09)
18-24	ND(0.07)
24-30	ND(0.07)
30-36	ND(0.09)
36-42	ND(0.10)

SED-T53-NSNC

Depth (in)	PCB (mg/kg)
0-3	0.49
3-6	0.48
6-12	0.46
12-18	ND(0.09)
18-24	ND(0.08)
24-30	ND(0.08)
30-36	ND(0.09)
36-42	ND(0.10)
42-48	ND(0.11)
48-54	ND(0.10)
54-60	ND(0.10)
60-66	ND(0.09)
66-72	ND(0.08) [ND(0.08)]
72-75	ND(0.07)
75-81	ND(0.08)

NST54-N

Depth (cm)	PCB (mg/kg)
0-1	0.09
1-2	0.30
2-3	0.14
3-4	0.13
4-5	0.12
5-6	0.11
6-7	0.13 [0.12]
7-8	0.17
9-10	0.25
14-15	0.17
19-20	ND(0.06)
24-25	ND(0.06)
29-30	ND(0.06)
34-35	ND(0.05) [ND(0.06)]
39-40	ND(0.06)
44-45	ND(0.06)
49-50	ND(0.06)
54-55	ND(0.06)
59-60	ND(0.06)
64-65	ND(0.06)
69-70	ND(0.06)
74-75	ND(0.06)
79-80	ND(0.06)
84-85	ND(0.06)
89-90	ND(0.06)
94-95	ND(0.06)
99-100	0.11

SED-T57-NSN

Depth (in)	PCB (mg/kg)
0-3	ND(0.07)
3-6	ND(0.06)
6-12	ND(0.08)
12-18	ND(0.09)
18-24	ND(0.08)
24-30	ND(0.09)
30-36	ND(0.09)
36-42	ND(0.10)
42-48	ND(0.07)
48-54	ND(0.07)
54-58	ND(0.06)

SED-T57-NSS

Depth (in)	PCB (mg/kg)
0-3	0.62
3-7	0.20

SED-T56-NSN

Depth (in)	PCB (mg/kg)
0-3	1.05
3-6	0.71
6-12	0.08
12-19	ND(0.06)

SED-T56-NSS

Depth (in)	PCB (mg/kg)
0-3	0.56
3-6	0.09
6-12	ND(0.05)
12-18	ND(0.05)

SED-T55-NSN

Depth (in)	PCB (mg/kg)
0-3	0.14
3-6	0.12
6-12	ND(0.11)
12-18	ND(0.12)
18-24	ND(0.12)

SED-T55-NSS

Depth (in)	PCB (mg/kg)
0-3	24.11
3-6	59.49
6-12	0.17
12-16	0.08
16-24	ND(0.05)

SED-T58-NSN

Depth (in)	PCB (mg/kg)
0-3	0.14
3-6	ND(0.08)
6-12	ND(0.07) [ND(0.08)]
12-18	ND(0.07)
18-24	ND(0.08)
24-30	ND(0.08)
30-36	ND(0.08)
36-42	ND(0.10)
42-48	ND(0.11)
48-54	ND(0.11)
54-60	ND(0.10)
60-66	ND(0.10)
66-72	ND(0.11)
72-78	ND(0.09)
78-84	ND(0.09)

SED-T58-NSS

Depth (in)	PCB (mg/kg)
0-3	0.38
3-6	0.42
6-14	ND(0.05)

SED-T59-NSN

Depth (in)	PCB (mg/kg)
0-3	0.09
0.39-3	ND(0.07)
3-12	ND(0.08)
12-24	40.37
24-31	ND(0.08)

SED-T59-NSS

Depth (in)	PCB (mg/kg)
0-3	0.23
3-6	0.66
6-12	ND(0.08)
12-18	ND(0.09)
18-24	ND(0.07)
24-30	ND(0.07)
30-36	ND(0.09)
36-42	ND(0.10)

NST53-N

Depth (in)	PCB (mg/kg)
0-3	ND(0.06)

NST53-S

Depth (in)	PCB (mg/kg)
0-3	ND(0.06)

GRASSE RIVER STUDY AREA
MASSENA, NEW YORK

**2003 THROUGH 2010
NEAR SHORE SAMPLING LOCATIONS
AND PCB RESULTS**

ALCOA

FIGURE
7

SEE FIGURE 1 FOR NOTES AND COMPLETE LEGEND INFORMATION